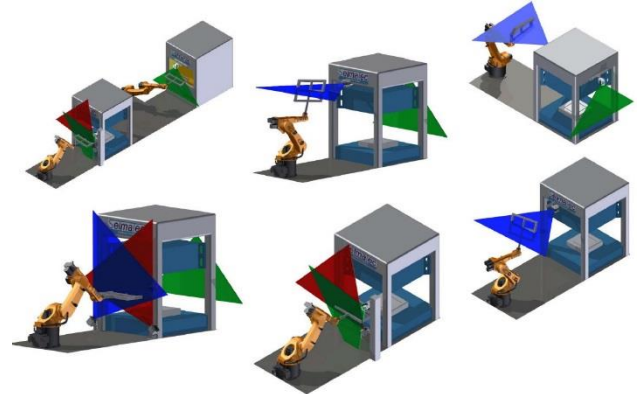
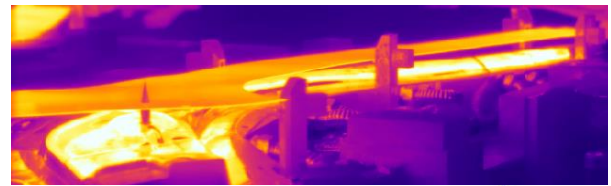




BENEFITS

- **100% thermal inline monitoring** of temperature control regarding strength, dimensional stability
- **Maximum temperature measurement accuracy** by using short-wave IR sensors
- **Cycle time-neutral inline measurement** by line-shaped component recording during component movement
- **Early detection** of tool wear and system malfunctions of oven, press and tools
- **Optimized teaching of tooling**
- **Archiving** of radiometric temperature recordings and all system parameters for up to 22 years
- **Visualization** in the intranet via browser (integrated web server)
- **Interface** connection e.g. via OPC to customer-side control
- ...



DESCRIPTION / EXAMPLE OF APPLICATION

The integration of this stand-alone **PH-Inspector system** enables reliable thermal compliance with the process specifications, including an automatic inline alarm / outfeeding request for non-compliance with adjustable temperature windows. By integrating furnace and press control via OPC and archiving all process data, anomalies are not only detected and alarmed, but they also significantly simplify troubleshooting.

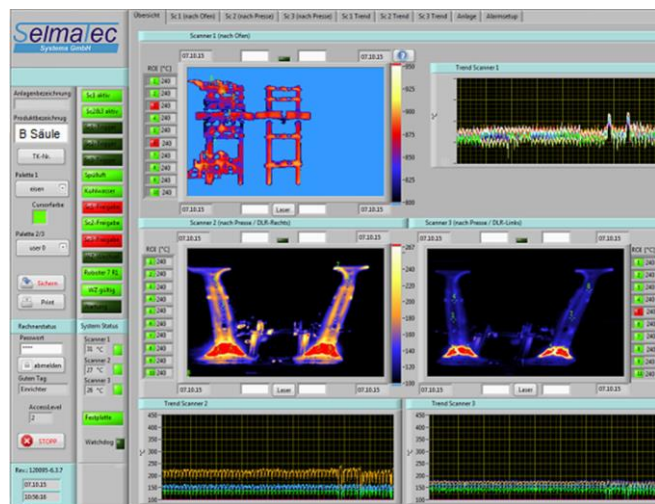
If required, a web server visualizes the data acquisition software in the entire intranet.

The integrated recipe management requires no further intervention when changing the tool, as the system automatically uses stored, tool-specific test recipes.

Thanks to the open system layout, further hardware and software functions as well as additional sensors can be retrofitted at any time if required.

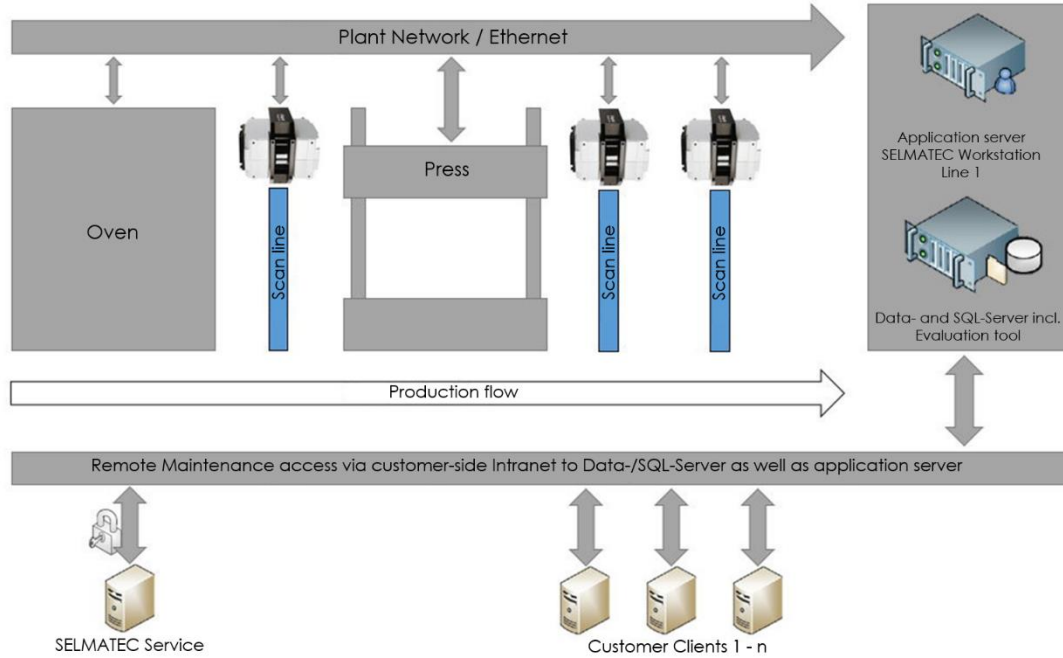
MEASUREMENT SPECIFICATIONS

Temperature range	20 ... 1200°C
Sensors/Pyrometers:	1-3 IR-Line scanner (Standard) optional Pyrometer, IR-Camera, NIR-Camera, Vision-Camera
Data transfer	OPC (Standard) optional Profinet,
interfaces	Profibus, Analog-Digital I/O...
Power supply	230VAC (Panel-PC, Interface) 24VDC (Sensors)
Scope of delivery	Complete system solution Incl. Commissioning and training

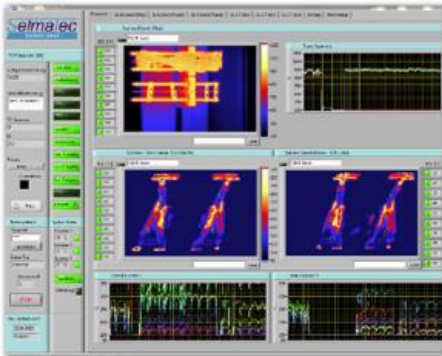




LAYOUT EXAMPLE



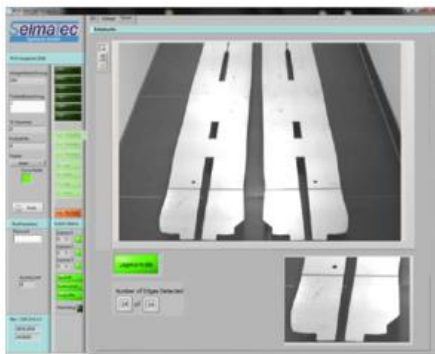
SOFTWARE



Thermography
(as real Temperature measurement!)



Process data tracking



Position control Light
(not measuring)



Position control
(measuring)