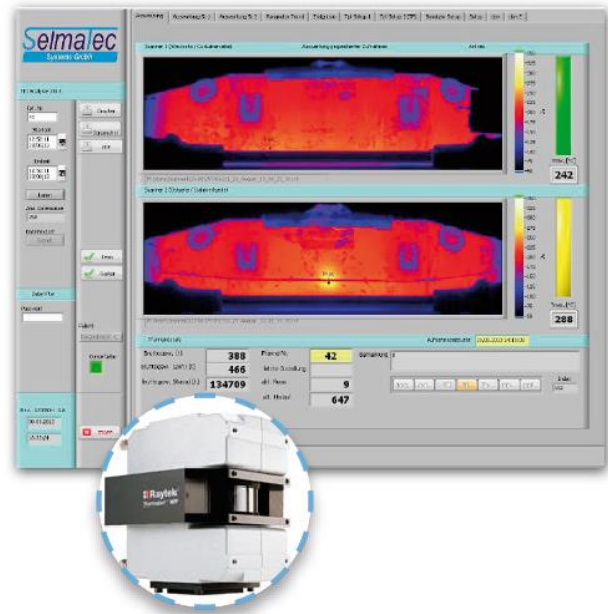




## THE BENEFITS AT A GLANCE

- **Thermal monitoring** of mobile torpedo ladles from two sides
- **Precise assessment** of the state of the lining, including an alarm if a maximum temperature threshold is exceeded
- **Optimise** torpedo ladle maintenance cycle
- **Separate trend monitoring / traceability** for individual torpedo ladles – analysis function
- **Event loggin** (overall and car-specific) and reporting function
- **Interface connection** to customer-side data system through which process parameters are send
- **Visualisation** via web server access



## DESCRIPTION / EXAMPLES OF USE

The **IR TP Inspector** system consists of two **Raytek MP150** stationary IR line scanners, as well as an interface and system PC unit with the **SELMATEC TP Inspector software package**. The system is designed for the thermal inline monitoring of torpedo ladles aimed at preventing harm to operating equipment and personnel and obtaining accurate statements on the state of the lining.

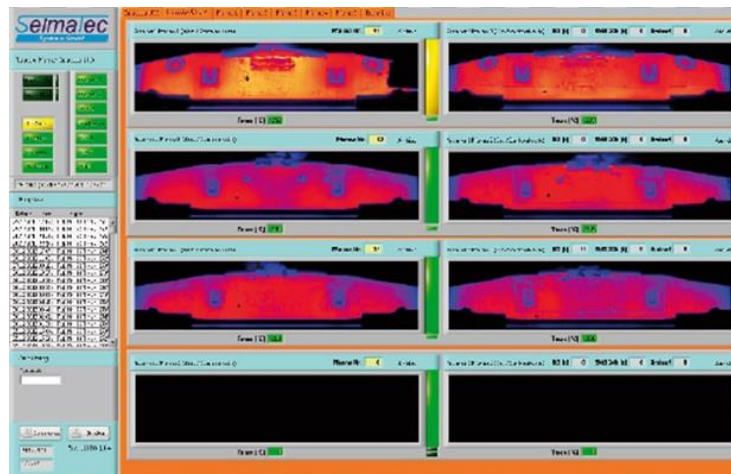
As an option, a range of different process parameters for each IR heat image of a torpedo ladle car can be sent to and saved in a database via Ethernet, OPC, ProfibusDP, analogue signals and so on. A web interface visualises the data capturing and evaluation software within the entire Intranet, and can also be operated.

Data capturing and evaluation software acquires the measured results from the IR line scanner and generates an alarm if previously defined measurement limits are exceeded. The IR heat images are stored and made available for subsequent analysis, either locally or on a network on the system PC / server.

A sturdy protective housing made from durable stainless steel means that the IR line scanners can be used at the track-side.

## MEASUREMENT PARAMETERS

<b>Temperatur range</b>	20 .. 350 °C
<b>Spectral range</b>	3,9 µm
<b>Emissivity</b>	0,1 ... 1,0 adjustable
<b>Bandage speed</b>	2..12km/h
<b>Data transmission</b>	Ethernet
<b>Interfaces</b>	OPC, TCP, Profibus, analogue-digital I/O...
<b>Power Supply</b>	110/230 VAC power feed
<b>Delivery contents</b>	complete system incl. IR line scanner, System-PC/SQL-Server, Interface unit, switchboards, air blower, Protective housings, RFID-Tagreader





CUSTOMIZED  
ENGINEERING

Inline temperature monitoring of torpedo ladles

# IR TP INSPECTOR®

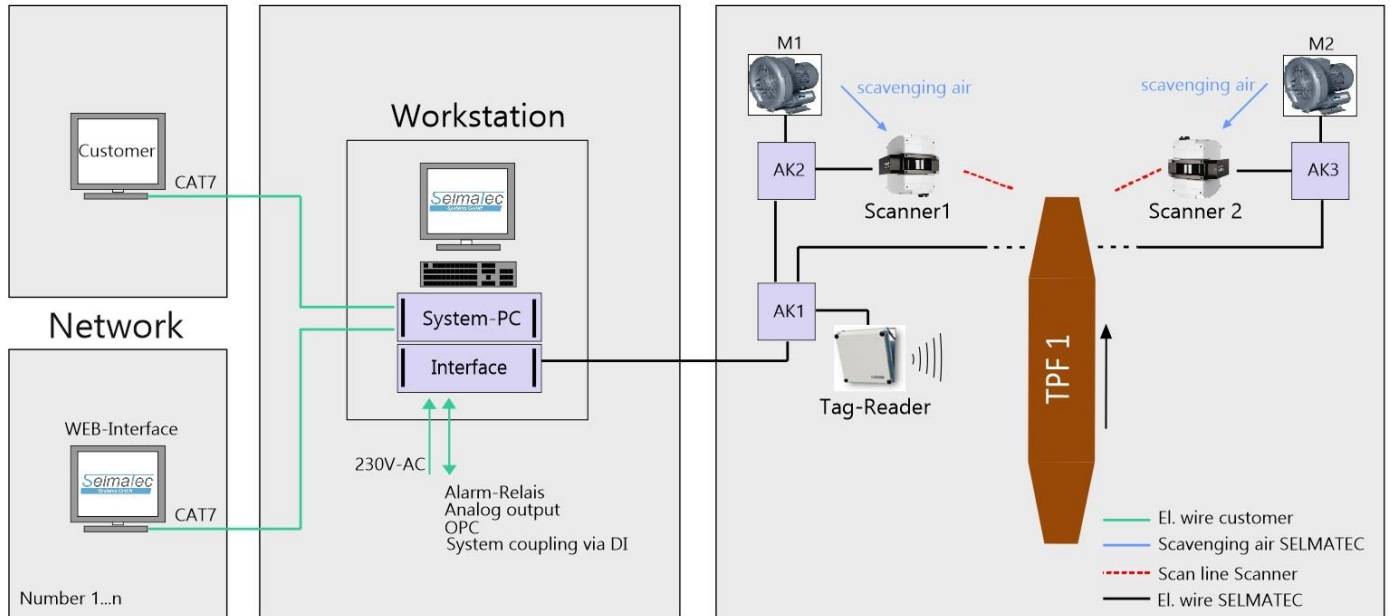
Data sheet

## SAMPLE LAYOUT

Control station

Container

Field level



## EXAMPLES / DIAGRAMS



Customised  
versions  
available!