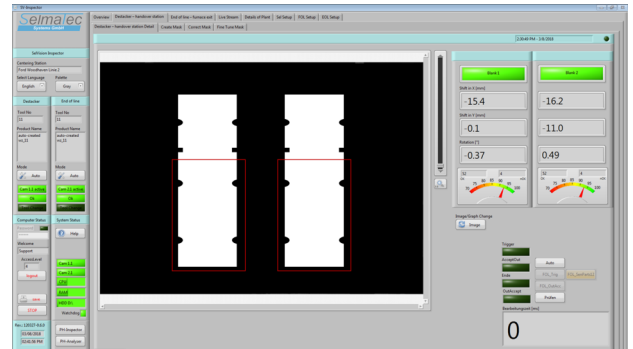


### BENEFITS

- Inline centering tasks / contour position control
- Almost time neutral
- High operating comfort
- Fast teach-in of new test recipes
- Offline teaching
- High resistance to extraneous light
- Adjustable archiving functions
- Auto report functions
- Interface connection e.g. via Profinet to customer controls
- ...



### DESCRIPTION

The **CT-Inspector** enables reliable component centering and monitoring of the exact component position through component contour detection in a manufacturing process.

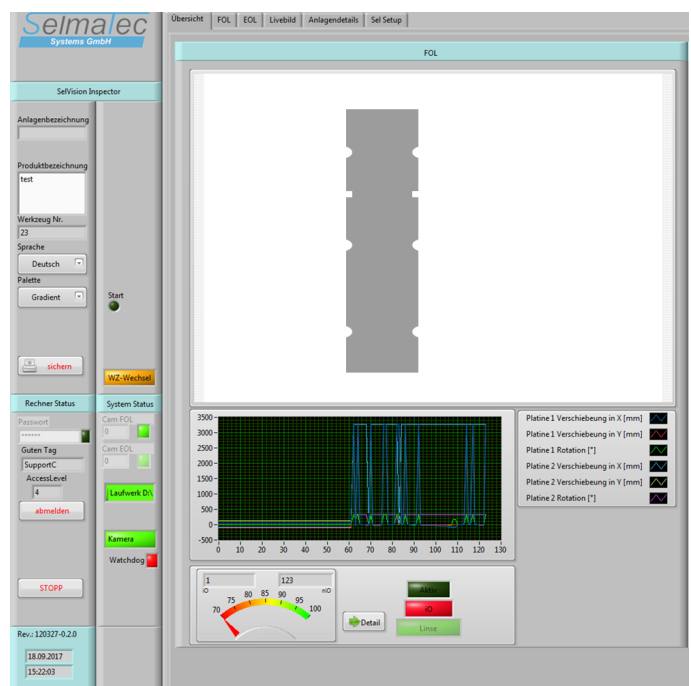
In stacking/centering applications, correction data of the individual components can be transmitted to a robot or feeder/transfer system to ensure a 100% repeatable deposit position in the downstream process. The system works so fast that hardly any process delays occur and at the same time offers a high degree of teach-in and user-friendliness.

Thanks to the integrated recipe management, no further intervention is required in the event of a mold change, as the system automatically accesses stored, mold-specific test recipes.

Thanks to the open system layout, additional hardware and software functions can be retrofitted at any time if required.

### MEASUREMENT PARAMETERS

<b>Sensors</b>	NIR-Camera, Vision-Camera
<b>Data Transfer</b>	OPC (Standard) Profinet (Optional)
<b>Interfaces</b>	Profibus, Analog-Digital I/O...
<b>Power Supply</b>	230 VAC (Panel-PC, Interface) 24 VDC (Cameras)
<b>Scope of Delivery</b>	Complete system solution Incl. commissioning and training



### EXAMPLE LAYOUT

- There is a wide range of options
- The system is flexible, easily expandable and therefore well adaptable to individual needs

