

Highlights

- Stainless steel protective housing (XXXSYSPHSS)
- Stainless steel protective housing with external air-water-cooler (XXXSYSPHSSCO)
- Quick-release rail mounted system for MP150 linescanner
- Air purge for protective window
- 3-dimensional adjustable mounting bracket for a precise alignment
- IP54 rating

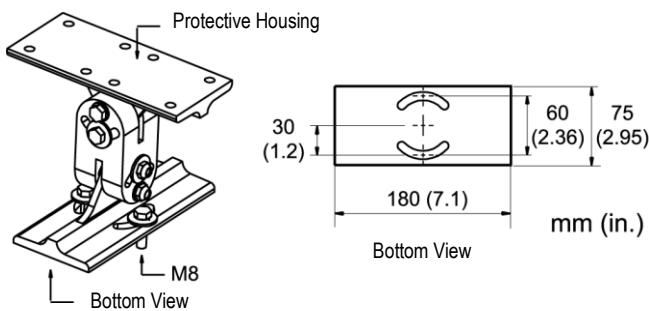
Specification

Ambient Temperature	
Minimum	-40°C (-40°F) - for MP150 with internal heater
Maximum	45°C (113°F) - with MP150, shadow temperature, no direct sunlight
Maximum with Air-Water-Cooler	80°C (176°F) without MP150 max. 130°C (266°F)
Environmental Rating	IP54
Material	
Housing	stainless steel 1.4301
Seal	EPDM, CR
Mounting bracket	galvanized steel
Dimension	
Housing (H × W × L) with mounting bracket	300 × 300 × 300 mm (12 × 12 × 12 in) H 450 mm (18 in)
Weight	13 kg (29 lb) - without MP150
Air Purge	
Connector	Outer Ø 8 mm (0.31 in)
Pressure	1.5 - 3 bar (22 psi) - cleaned air

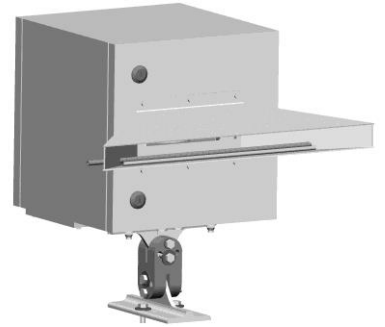
Scope of Delivery

- Protective housing with removable window
- Quick-release rail mounted system
- Adjustable mounting bracket
- Spare removable window

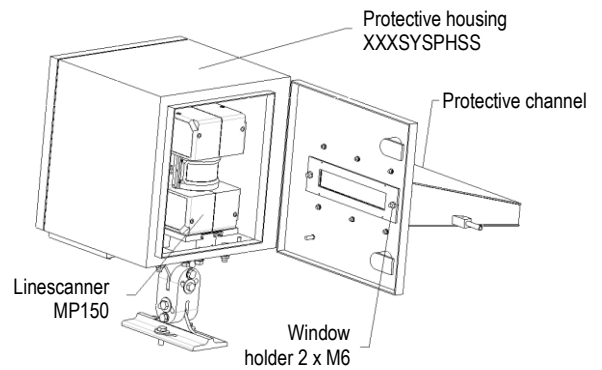
Adjustable Mounting Bracket



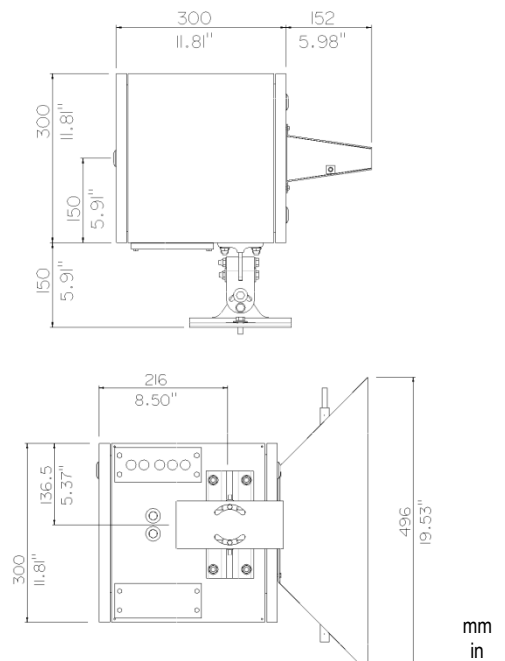
MP150 Protective Housing Datasheet



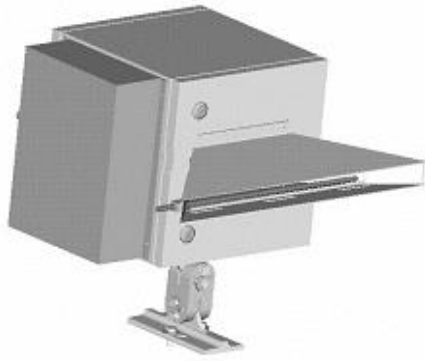
Protective Housing with Linescanner



Dimensions



Protective Housing with Air-Water-Cooler

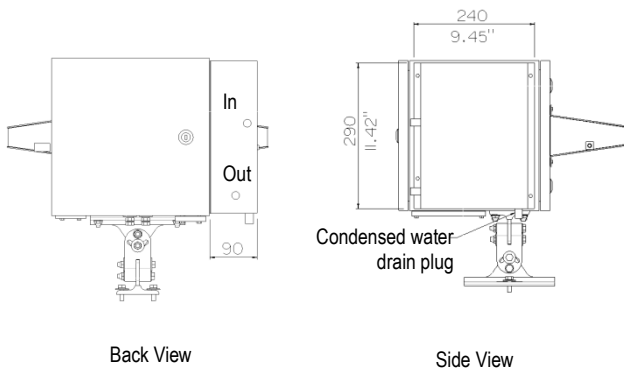


XXXSYSPHSSCO

Specification for Air-Water-Cooler

Ambient Temperature	40 to 130°C @ 200 l / h 104 to 266°F @ 53 gallon / hour (20°C / 68°F water in)
Cooling Power	200 W @ 200 l / h 200 W @ 53 gallon / hour (20°C / 68°F water in)
Air Throughput Fan	50 m³ / h (65 yard³ / hour)
Power Supply	24 VDC, 2.5 W
Water Connector	Ø 10 mm (0.39 in) max. 6 bar (87 psi)
Environmental Rating	IP54
Dimensions (H × W × L)	290 × 240 × 90 mm (11.4 × 9.4 × 3.5 in)
Weight	3 kg (6.6 lb) - without protective housing
Material	stainless steel 1.4301

Dimensions for XXXSYSPHSSCO

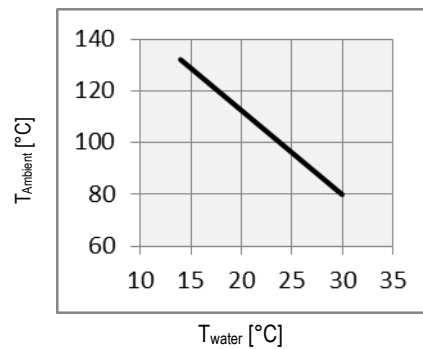


Back View

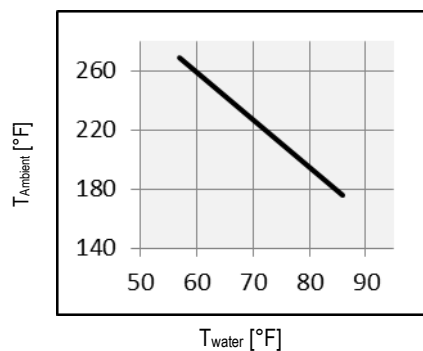
Side View

Cooling Efficiency

Cooling Efficiency @ 200 l / h



Cooling Efficiency @ 53 gallon / hour



Selmatec
Systems GmbH

Von-Coellen-Weg 10 • 21379 Scharnebeck
Phone: +494136 / 362054-4 • info@selmatec-systems.de
Fax: +494136 / 362054-5 • www.selmatec-systems.de

Fluke Process Instruments

Americas

Santa Cruz, CA USA
Tel: +1 800 227 8074 (USA/Canada only)
+1 831 458 3900
solutions@flukeprocessinstruments.com

EMEA

Berlin, Germany
Tel: +49 30 4 78 00 80
info@flukeprocessinstruments.de

China

Beijing, China
Tel: +86 10 6438 4691
info@flukeprocessinstruments.cn

Japan

Tokyo, Japan
Tel: +81 03 6714 3114
info@flukeprocessinstruments.jp

Asia East and South

India Tel: +91 22 2920 7691
Singapore Tel: +65 6799 5578
sales.asia@flukeprocessinstruments.com



Worldwide Service

Fluke Process Instruments offers services, including repair and calibration. For more information, contact your local office.

www.flukeprocessinstruments.com

© 2017 Fluke Process Instruments
Specifications subject to change without notice. 02/2017 – Rev. D2, 57861